

TREND MICRO™

Cloud Edge 50 G2

Quick Start Card

Routing Mode/Bridge Mode



Trend Micro Cloud Edge is a security solution for MSPs (Managed Service Provider) that combines on-premises and cloud-based security features. Deploy your Cloud Edge 50 G2 on-premises and the MSP can remotely manage your network through the cloud.

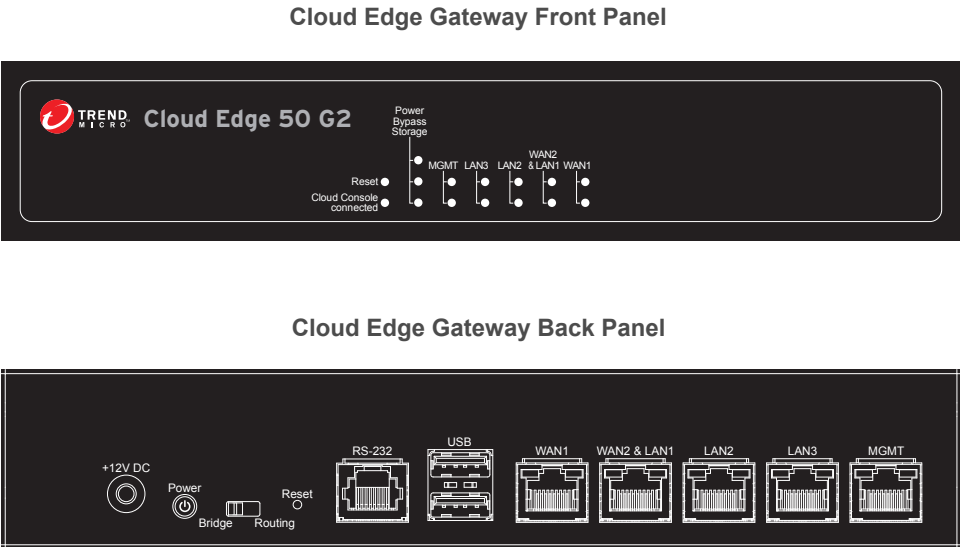
The recommendation is to choose Bridge Mode whenever possible. You would typically use a Bridge Mode deployment on a private network behind a router and in front of a switch. Configure Routing Mode when you want the Cloud Edge gateway to function as a router as well as providing security and threat protection.

For more information about deployment, see <http://docs.trendmicro.com/en-us/smb/cloud-edge.aspx>

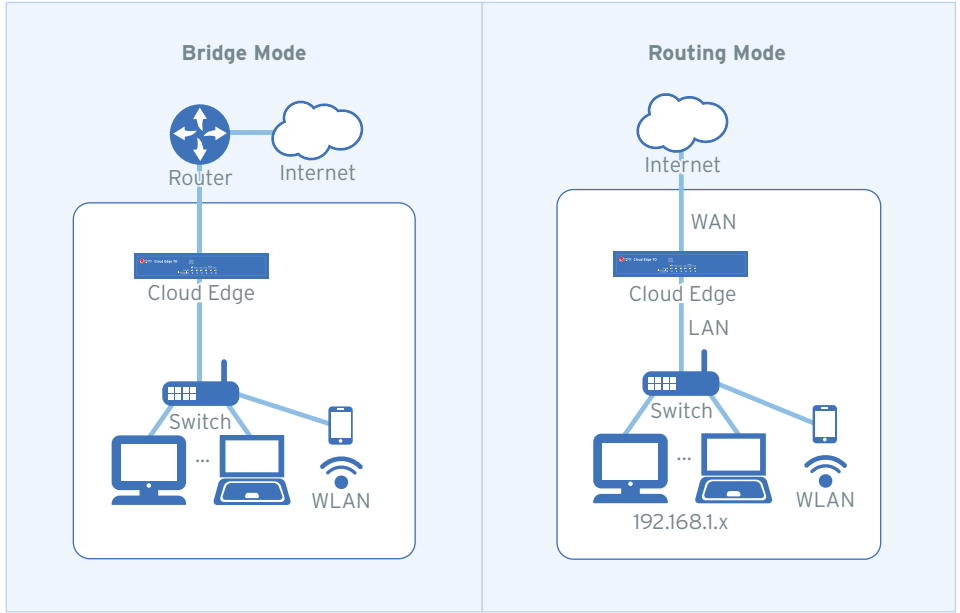
1 Opening and Inspecting the Carton



2 Examining the Cloud Edge Gateway



3 Deployment Modes



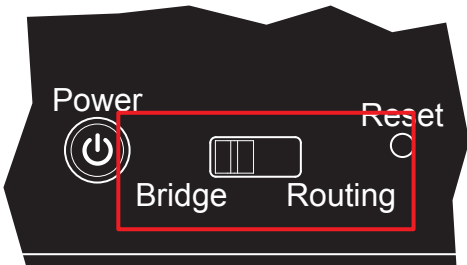
Mode	Description
Bridge	Gateway acts as a transparent layer 2 device, providing scan and threat protection without interrupting traffic flow. Does not require client, router, or switch modifications.
Routing	Gateway is visible on the network and acts as a layer 3 routing device with traffic scanning and control capabilities.

4 Deployment Checklist

Requirement	Details
Ethernet cables (3)	Connect to MGMT, WAN, and LAN1 ports.
IP addresses (1-2)	Bridge Mode: <ul style="list-style-type: none"><li>Internal address for virtual interface: DHCP or Static (IP address, netmask, and gateway)</li></ul> Routing Mode: <ul style="list-style-type: none"><li>External address for WAN: DHCP, Static, or PPPoE (user name/password)</li><li>Internal address for LAN1: DHCP or Static</li></ul>
DNS settings	Bridge Mode: <ul style="list-style-type: none"><li>Your network DNS server IP addresses</li></ul> Routing Mode: <ul style="list-style-type: none"><li>Your network DNS server IP addresses if not assigned by ISP</li></ul>
Laptop with Ethernet port	Laptop with the following: <ul style="list-style-type: none"><li>Adobe™ Flash™ 10 or later</li><li>Supported web browser<ul style="list-style-type: none"><li>Firefox™ 70 or later</li><li>Google™ Chrome 78 or later</li><li>Internet Explorer™ 11</li></ul></li></ul>

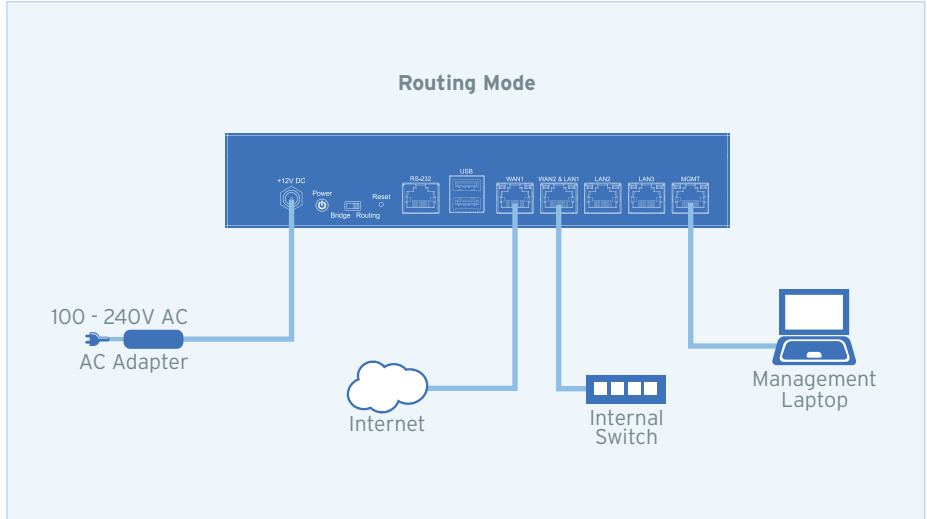
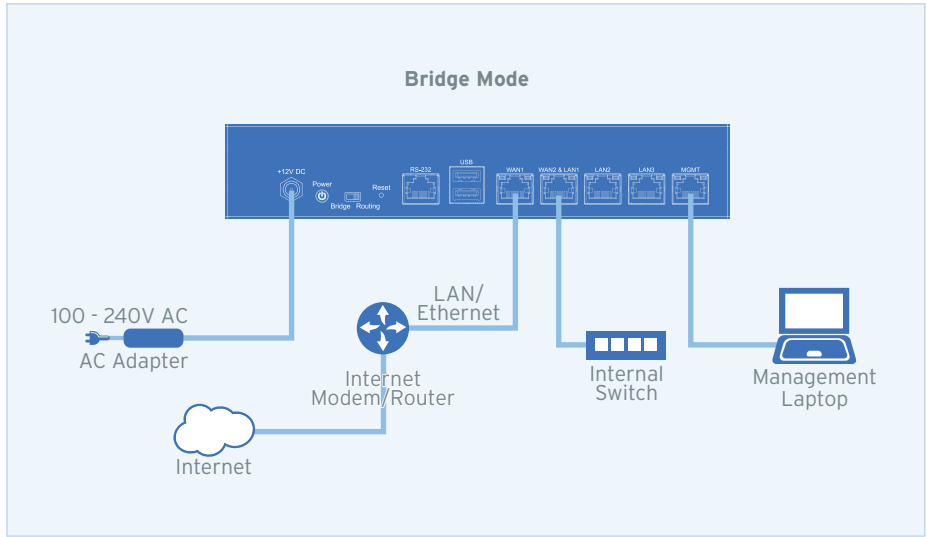
5 Setting up the Hardware

1. Toggle the switch on the back panel as needed.
2. Connect the Cloud Edge gateway to a power source.
3. Power on the Cloud Edge gateway.



6 Connecting to the Network

1. Connect the WAN port to a wide area network (i.e. Internet).
2. Connect the LAN1 port to a switch on your internal network.
3. Connect the MGMT port to the management laptop.



TREND MICRO™

Cloud Edge 50 G2

Quick Start Card

Routing Mode/Bridge Mode

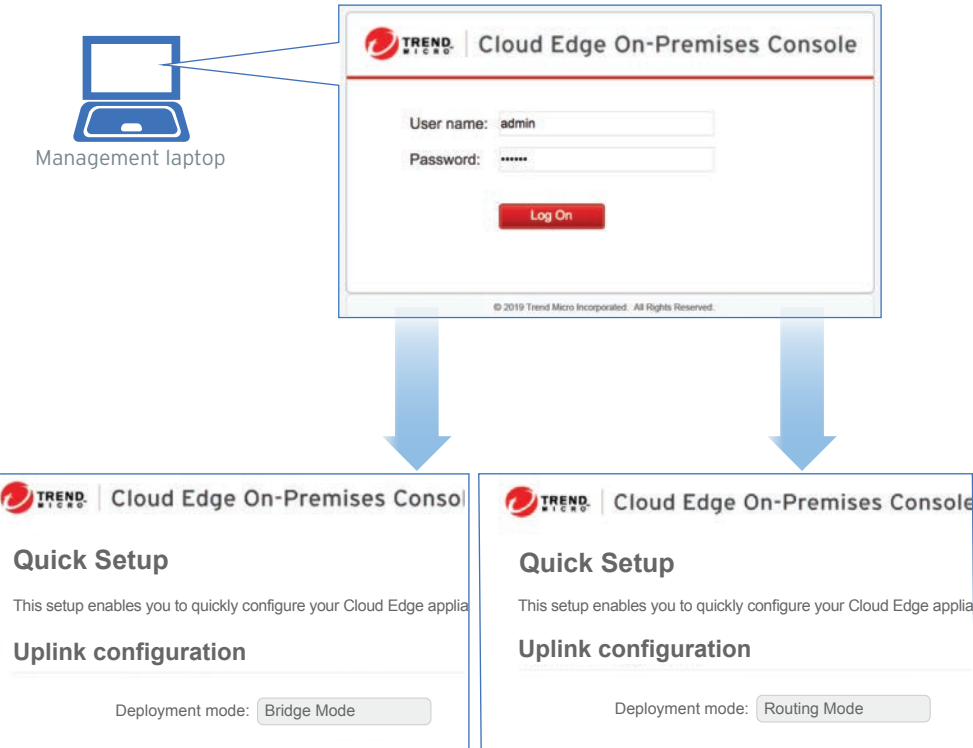


7 Logging on the Web Console

1. Open a supported web browser.
2. Go to the following URL: `https://192.168.252.1:8443/`
3. Specify the logon credentials.
  - **User name:** admin
  - **Password:** adminCloudEdge

4. Press **Enter** or click **Log On**.

If you see a warning message in your browser, you can ignore the message and proceed to the Cloud Edge Cloud Console web site.



8 Performing the Initial Configuration

After logging on for the first time, the Quick Setup screen opens automatically.

Perform one set of initial configuration steps below - either for Bridge Mode or for Routing Mode, depending on the deployment mode you chose.

Bridge Mode

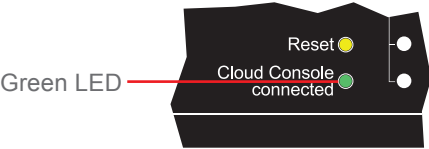
1. In the **Uplink configuration** section, specify information for br0.
  - **DHCP**
  - **Static:** Specify IPv4 address, netmask, and gateway.
2. Specify DNS server IP addresses (if not assigned by DHCP).
3. Under **System settings** section:
  - a. Specify a FQDN in the **Host name** field.
  - b. Configure time settings.
    - Automatically: Select **Enable NTP server** and enter the NTP server IP address.
    - Manually: Select **Manually set time** and enter time in the **Local time** field.
4. Click **Start Configuration Test** to verify and then click **Save & Register**.

Routing Mode

1. In the **Uplink configuration** section, specify information for the WAN interface.
  - **DHCP**
  - **PPPoE:** Specify user name and password.
  - **Static:** Specify IPv4 address, netmask, and gateway.
2. Specify DNS server IP addresses (if not assigned by DHCP or PPPoE).
3. Under **System settings** section:
  - a. Specify a FQDN in the **Host name** field.
  - b. Configure time settings.
    - Automatically: Select **Enable NTP server** and enter the NTP server IP address.
    - Manually: Select **Manually set time** and enter time in the **Local time** field.
4. Click **Start Configuration Test** to verify and then click **Save & Register**.
5. Click on the **Cloud Edge On-Premises Console** link.
6. Go to **Network tab → Interfaces**.
7. Click the LAN1 interface, select L3 type, and configure IP address settings.
  - **DHCP**
  - **Static:** Specify IPv4 address, netmask, and optionally, a gateway.
8. Click **Apply**.

9 Verifying Connectivity

The Green LEDs (Light-Emitting Diodes) on the front panel shows the deployment status.



Cloud Console LED	Status
No light	Gateway cannot communicate with the Internet.
Solid green light	Gateway is registered and communicating with Cloud Edge Cloud Console.
Blinking green light	Gateway is not registered or cannot communicate with Cloud Edge Cloud Console. Contact your managed service provider for assistance.

10 Register Cloud Edge with Cloud Edge Cloud Console

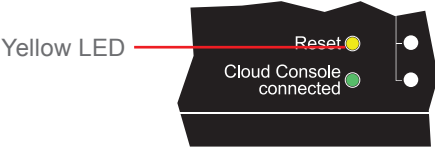
After the gateway successfully connects to Cloud Edge Cloud Console, you will receive an email with a link to use to register the product online.

1. Open the email sent from Trend Micro.
2. Click on the link provided in the email.
3. Register the product using the gateway serial number located on the gateway appliance.

11 Restoring Factory Settings

Restore the Cloud Edge gateway to factory settings to reconfigure your network settings or to decommission hardware. The yellow LED on the front panel shows the factory settings restore status.

1. Power on the Cloud Edge gateway and wait for the system to start.
2. Press and hold the reset button located on the back panel for about 10 seconds until the yellow reset LED on the front panel starts to blink.
3. Release the reset button. The gateway starts the factory reset. The gateway will restart two times during this process.



12 Cautions

1. Lithium Battery Caution
  - There is risk of explosion if the battery is replaced by an incorrect type.
  - Dispose of used batteries according to the instructions.
  - Installation should be performed only by a skilled person who knows all installation and applicable device specifications.
  - Do not carry power supplies by the handle when moving to another place.
  - Please conform to your local laws and regulations regarding safe disposal of lithium batteries.
  - Disposal of a battery into a fire or a hot oven, or mechanically crushing or cutting of a battery can result in an explosion.
  - Leaving a battery in an extremely high temperature environment can result in an explosion or the leakage of flammable liquid or gas.
  - A battery subjected to extremely low air pressure may result in an explosion or leakage of flammable liquid or gas.
2. Grounding Caution

This equipment must be grounded and the power cord for the product should be connected to a socket outlet with a grounded connection.

13 Contact Information

- Cloud Edge Website:  
[https://www.trendmicro.com/en\\_us/small-business/cloudedge-network-security.html](https://www.trendmicro.com/en_us/small-business/cloudedge-network-security.html)
- Cloud Edge Documents Website:  
<http://docs.trendmicro.com/en-us/smb/cloud-edge.aspx>
- List of worldwide offices and phone numbers:  
<http://www.trendmicro.com/us/about-us/contact/index.html>