

TREND MICRO™
Cloud Edge 100 G2

Quick Start Card

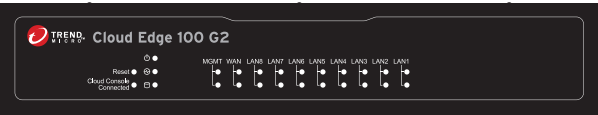
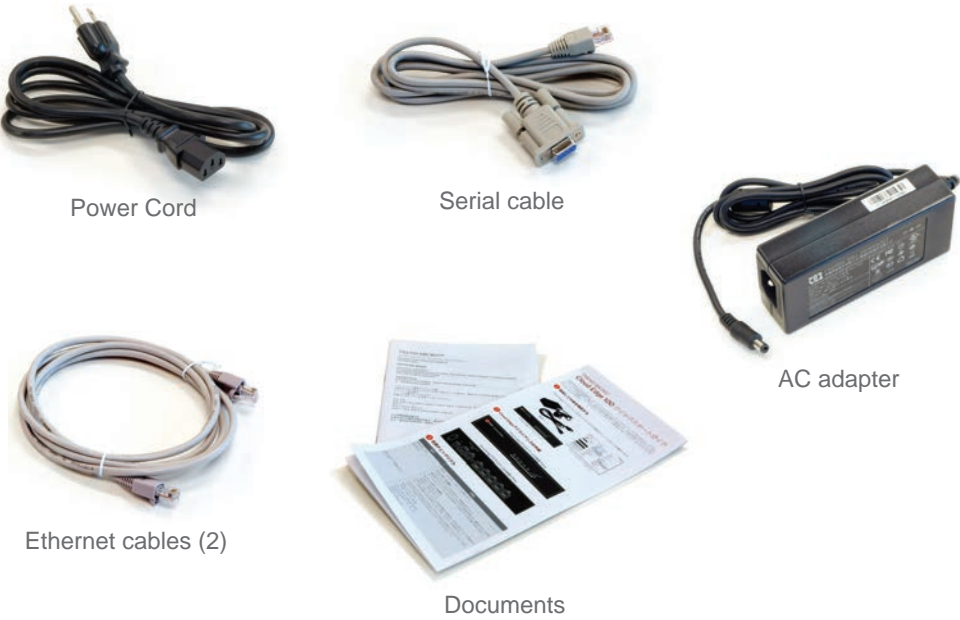
Routing Mode/Bridge Mode



Trend Micro Cloud Edge is a next generation security solution for MSPs (Managed Service Provider) that combines on-premises and cloud-based security features. Deploy your Cloud Edge gateways on-premises and the MSP can remotely manage your network through the cloud.

1 Opening and Inspecting the Carton

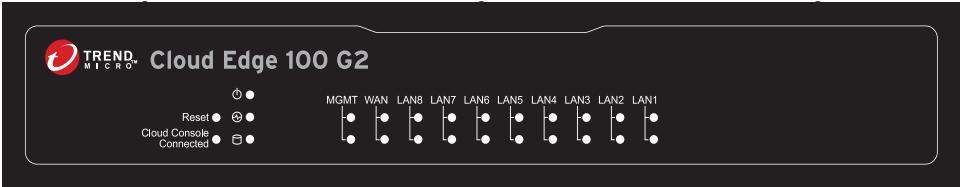
Verify that the Cloud Edge gateway carton contains the following items:



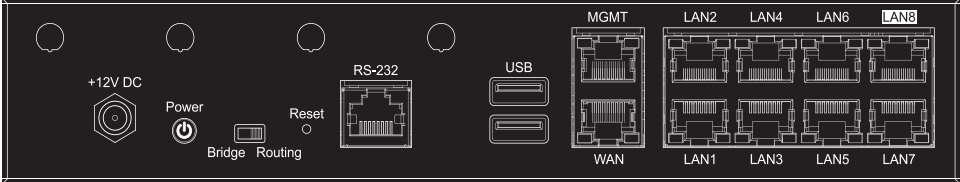
Cloud Edge Gateway

2 Examining the Cloud Edge Gateway

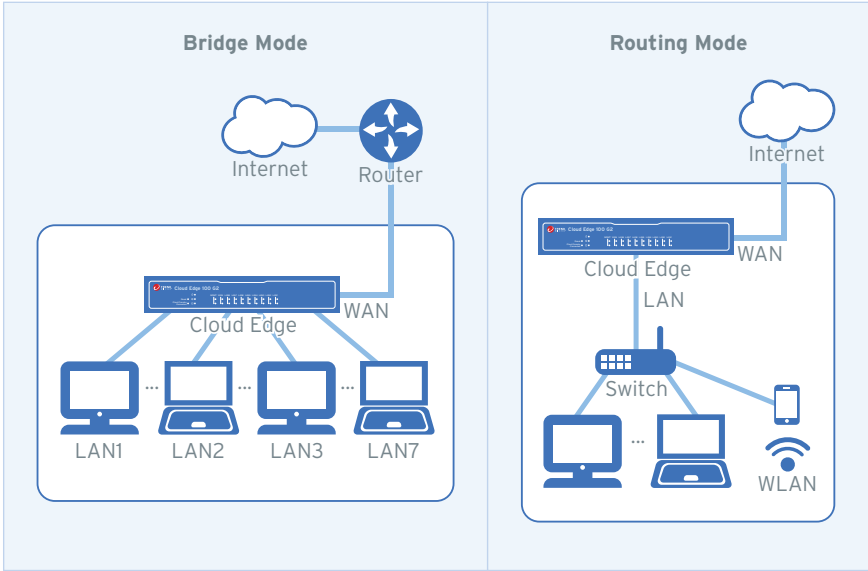
Cloud Edge Gateway Front Panel



Cloud Edge Gateway Back Panel



3 Deployment Modes



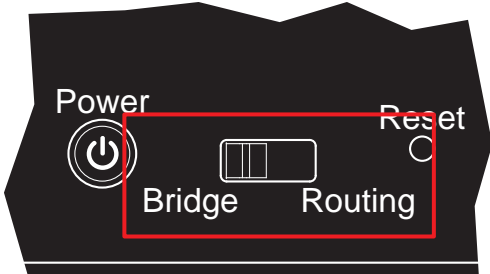
Mode	Description
Bridge	The Cloud Edge gateway acts as a transparent layer 2 device, providing scan and threat protection without interrupting traffic flow. In addition, the gateway functions as a hardware switch with a WAN port that provides the uplink to the Internet and seven LAN ports that can be connected directly to endpoints such as clients, servers, and Wi-Fi access routers.
Routing	The Cloud Edge gateway is visible on the network and acts as a layer 3 routing device with traffic scanning and control capabilities.

4 Deployment Checklist

Requirement	Details
Ethernet cables (3 cables)	Connect a laptop to the MGMT port. Connect the WAN port, which serves as an uplink to the Internet, to the upstream side of the network. Bridge Mode: <ul style="list-style-type: none">Connect the LAN1 port to an internal endpoint. Routing Mode: <ul style="list-style-type: none">Connect the LAN1 port to an internal network.
IP addresses (1-2 addresses)	Bridge Mode: <ul style="list-style-type: none">Obtain information for one internal address (sw0), either DHCP or static (IP address, netmask, and gateway). Routing Mode: <ul style="list-style-type: none">Obtain the information about connecting to the WAN from your Internet Service Provider (ISP): DHCP, Static, or PPPoE.Obtain IP address information for the LAN1 connection (Static).
DNS settings	Bridge Mode: <ul style="list-style-type: none">Your network DNS server IP addresses. Routing Mode: <ul style="list-style-type: none">Use either automatic DNS settings assigned by the ISP's DHCP or obtain your network DNS server IP addresses.
Laptop with Ethernet port	A computer that has the following software installed: <ul style="list-style-type: none">Adobe™ Flash™ 10 or laterSupported web browser<ul style="list-style-type: none">Firefox™ 61 or laterGoogle™ Chrome 68 or laterInternet Explorer™ 10-11

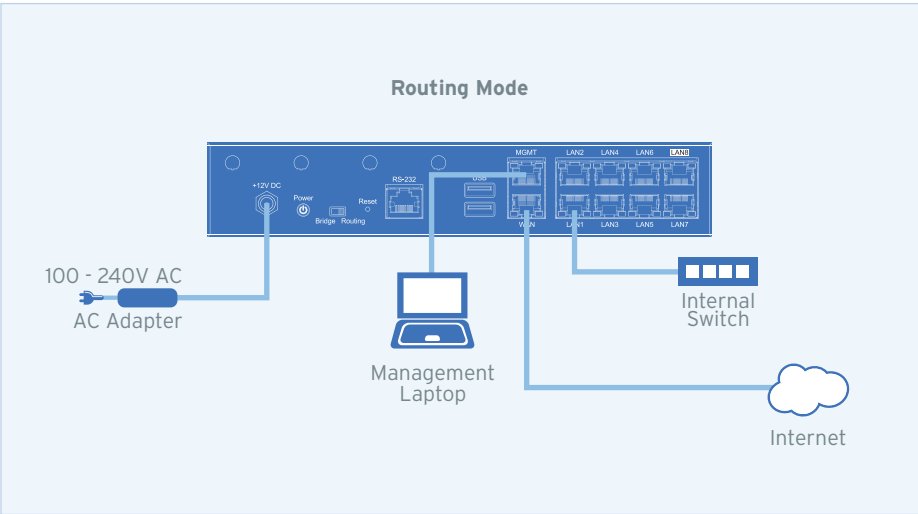
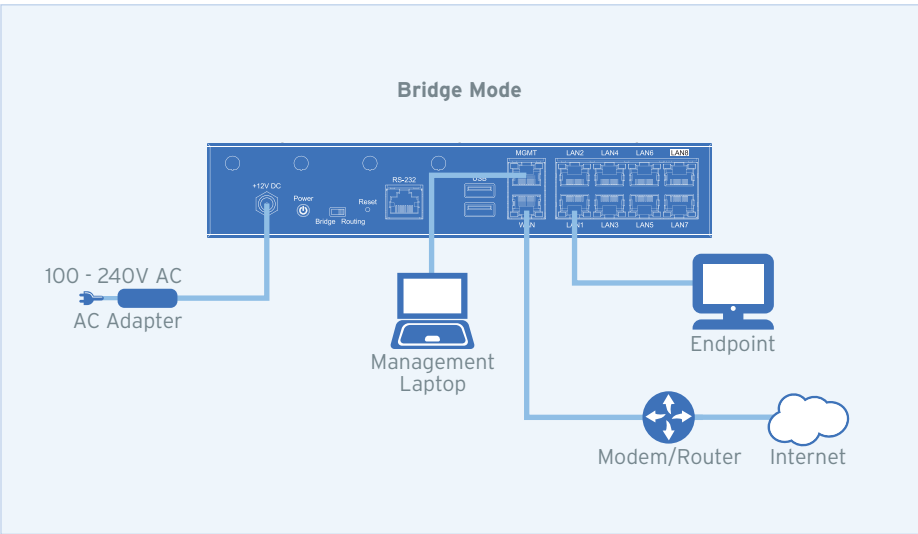
5 Setting up the Hardware

- Toggle the switch on the back panel as needed.
- Connect the Cloud Edge gateway to a power source.
- Power on the Cloud Edge gateway.



6 Connecting to the Network

- Connect the WAN port to a wide area network (i.e. Internet).
- Connect the LAN1 port to an internal endpoint (Bridge Mode) or an internal network (Routing Mode).



7 Logging on the Web Console

1. Connect computer to the Cloud Edge gateway **MGMT** port.
2. Open a supported web browser.
3. Go to the following URL: <https://192.168.252.1:8443/>
4. Specify the logon credentials.
 - **User name:** admin
 - **Password:** adminCloudEdge
5. Press **Enter** or click **Log On**.



8 Performing the Initial Configuration

After logging on for the first time, the Quick Setup screen opens automatically.

Bridge Mode

1. In the **Uplink configuration** section, specify information for sw0.
 - **DHCP**
 - **Static:** Specify IPv4 address, netmask, and gateway.

2. Specify DNS server IP addresses (if not assigned by DHCP).
3. Under **System settings** section:
 - a. Specify a FQDN in the **Host name** field.
 - b. Configure time settings.
 - Automatically: Select **Enable NTP server** and enter the NTP server IP address.
 - Manually: Select **Manually set time** and enter time in the **Local time** field.
4. Click **Start Configuration Test** to verify and then click **Save & Register**.

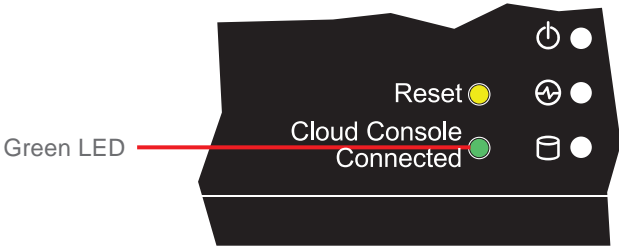
Note: You can modify the Intranet Security mode after initial deployment using Cloud Edge Cloud Console. You cannot modify which interfaces are included in the switch.

Routing Mode

1. In the **Uplink configuration** section, specify information for the WAN interface.
 - **DHCP**
 - **PPPoE:** Specify user name and password.
 - **Static:** Specify IPv4 address, netmask, and gateway.
2. Specify DNS server IP addresses (if not assigned by DHCP or PPPoE).
3. Under **System settings** section:
 - a. Specify a FQDN in the **Host name** field.
 - b. Configure time settings.
 - Automatically: Select **Enable NTP server** and enter the NTP server IP address.
 - Manually: Select **Manually set time** and enter time in the **Local time** field.
4. Click **Start Configuration Test** to verify and then click **Save & Register**.
5. Click on the **Cloud Edge On-Premises Console** link.
6. Go to **Network → Interfaces**.
7. Click the LAN1 interface, select L3 type, and configure IP address settings.
 - **DHCP**
 - **Static:** Specify IPv4 address, netmask, and optionally, a gateway.
8. Click **Apply**.

9 Verifying Connectivity

The Green LED (Light-Emitting Diode) on the front panel shows the deployment status.

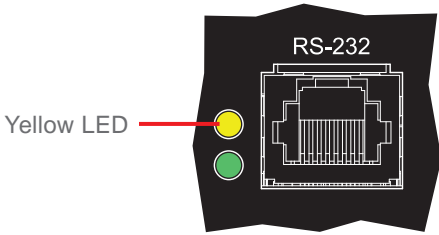


Green LED	Status
No light	The Cloud Edge gateway cannot communicate with the Internet.
Solid green light	The Cloud Edge gateway is registered and communicating with Cloud Edge Cloud Console.
Blinking green light	The Cloud Edge gateway is not registered or cannot communicate with Cloud Edge Cloud Console. Contact your managed service provider for assistance.

10 Restoring Factory Settings

Restore the Cloud Edge gateway to factory settings to reconfigure your network settings or to decommission hardware. The yellow LED (Light-Emitting Diode) on the back panel shows the factory settings restore status.

1. Power off the Cloud Edge gateway.
2. Press and hold the reset button located on the back panel.
3. Power back on the Cloud Edge gateway.
4. Release the reset button when the yellow LED starts to blink. The yellow LED blinks for 2 minutes and then the gateway restarts.



11 Cautions

1. Lithium Battery Caution
 - There is risk of explosion if the battery is replaced by an incorrect type.
 - Dispose of used batteries according to the instructions.
 - Installation should be performed only by a skilled person who knows all installation and device specifications which are to be applied.
 - Do not carry by the handle of power supplies when moving to another place.
 - Please conform to your local laws and regulations regarding safe disposal of lithium BATTERY.
 - Disposal of a battery into a fire or a hot oven, or mechanically crushing or cutting of a battery can result in an explosion.
 - Leaving a battery in an extremely high temperature surrounding environment can result in an explosion or the leakage of flammable liquid or gas.
 - A battery subjected to extremely low air pressure may result in an explosion or the leakage of flammable liquid or gas.
2. Grounding Caution

This equipment must be grounded and the power cord for product should be connected to a socket outlet with a grounded connection.

12 Contact Information

- Website:
<http://www.trendmicro.com>
- List of worldwide offices and phone numbers:
<http://www.trendmicro.com/us/about-us/contact/index.html>