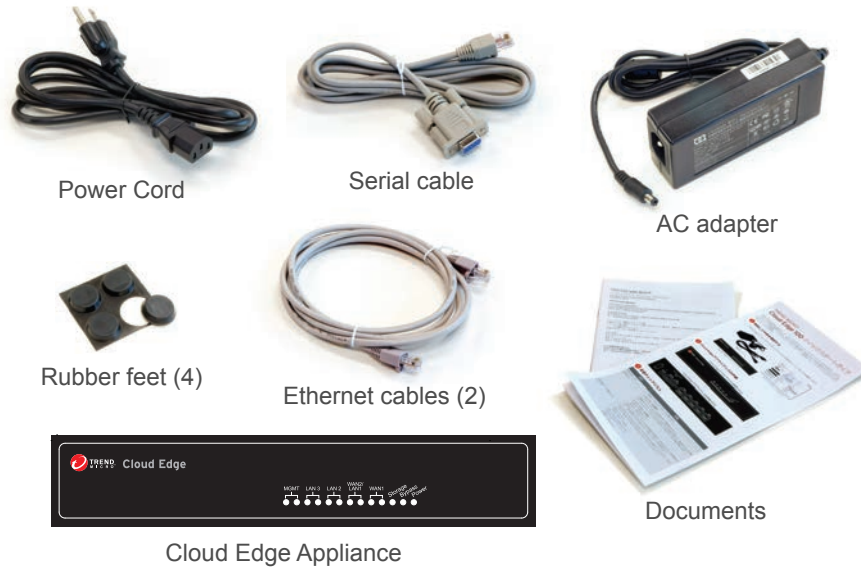


# TREND MICRO™ Cloud Edge 100 Quick Start Card

Trend Micro Cloud Edge is a next generation security solution for MSPs (Managed Service Provider) that combines on-premises and cloud-based security features. Deploy the Cloud Edge appliance on-premises and the MSP can remotely manage your network through the cloud.

## 1 Opening and Inspecting the Carton

Verify that the Cloud Edge appliance carton contains the following items:

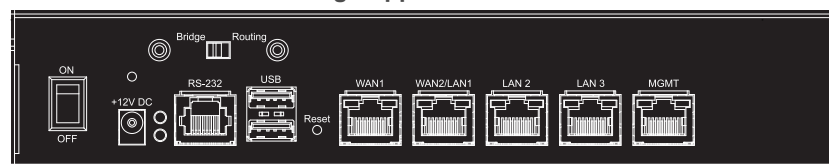


## 2 Examining the Cloud Edge Appliance

Cloud Edge Appliance Front Panel



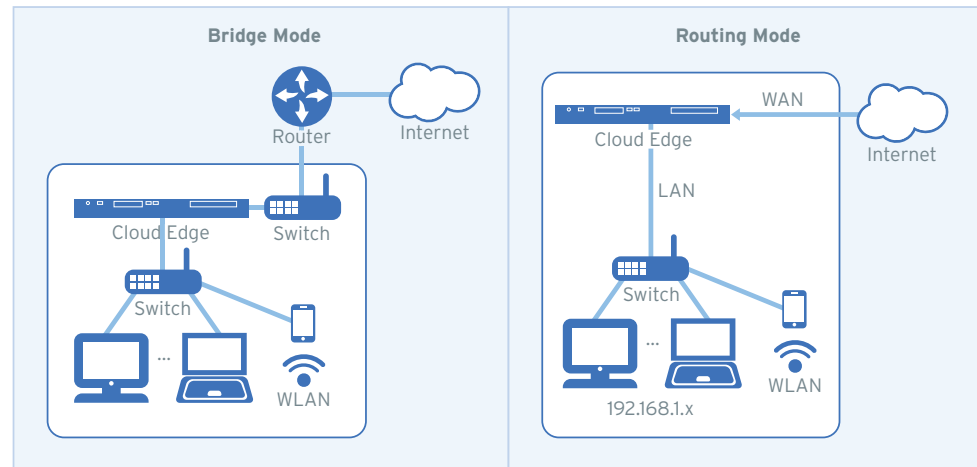
Cloud Edge Appliance Back Panel



## 3 Deployment Checklist

Requirement	Details
Ethernet cables (1-3 cables)	Connect to the management port (MGMT) and data ports (WAN1, WAN2/LAN1, LAN2, LAN3).
IP addresses (0-3 addresses)	DHCP addressing: <ul style="list-style-type: none"> <li>Obtain the IP address from your Internet Service Provider (ISP).</li> </ul> Static addressing: <ul style="list-style-type: none"> <li>One IP address for the appliance.</li> <li>Your network DNS server IP address.</li> <li>Your network gateway IP address.</li> </ul>
Laptop with Ethernet port	A computer that has the following software installed: <ul style="list-style-type: none"> <li>Adobe™ Flash™ 10 or later</li> <li>Supported web browser <ul style="list-style-type: none"> <li>Internet Explorer™ 9, 10, 11</li> <li>Firefox™ 24</li> <li>Google™ Chrome 32</li> </ul> </li> </ul>

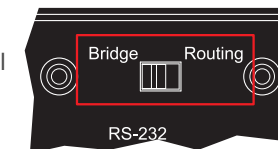
## 4 Deployment Modes



Mode	Description
Bridge	The Cloud Edge appliance transparently scans for threats without interrupting traffic flow. Deploying in bridge mode does not require client, router, or switch modifications.
Routing	The Cloud Edge appliance is visible on the network and acts as a layer 3 routing device with traffic scanning and control capabilities.

## 5 Setting up the hardware

- Toggle the switch on the back panel based on the deployment mode.



- Turn the appliance upside down and affix one rubber foot to each corner of the appliance. This keeps the appliance in place.
- Connect the Cloud Edge appliance to a power source.
- Power on the Cloud Edge appliance.

## 6 Performing the Initial Configuration

### Logging on the Web Console

1. Connect computer to the Cloud Edge appliance **MGMT** port.
2. Open a supported web browser.
3. Go to the URL: <https://setup.cloudedge> or <https://192.168.252.1:8443>.
4. Specify the logon credentials.
  - **User name:** admin
  - **Password:** adminCloudEdge
5. Press **Enter** or click **Log On**.

### Configure Using Quick Setup Screen

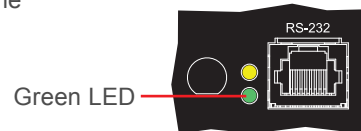
1. Under **Uplink configuration** section, specify:
  - **Static:**
    - **IPv4 address, IPv4 netmask, IPv4 default gateway, Primary DNS**
  - **DHCP**
  - **PPPoE** (Routing Mode only)
    - **User name, Password**
2. Under **System settings** section, specify:
  - **Host name**
  - **Enable NTP server:** select this to automatically update the clock, then add the NTP server IP address in **NTP server** field.
  - **Manually set time:** select this to manually specify your time zone.
  - **Location and City:** specify location and city to set you time zone.
3. Click **Test Configuration** to verify the network uplink configuration.
4. Click **Save & Register**.

## 7 Connecting to the Network

1. Connect the Cloud Edge appliance WAN1 port to a wide area network, such as the Internet.
2. Connect the Cloud Edge appliance LAN1 port to a local area network, such as a segment of your network.

## 8 Verifying Connectivity

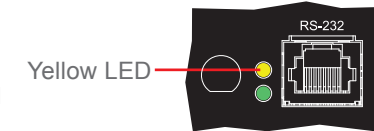
The Green LED (Light-Emitting Diode) on the back panel shows the deployment status.



Green LED	Status
No light	The Cloud Edge appliance cannot communicate with the Internet.
Solid green light	The Cloud Edge appliance is registered and communicating with the Cloud Edge cloud console.
Blinking green light	The Cloud Edge appliance is not registered or cannot communicate with the Cloud Edge cloud console. Contact your managed service provider for assistance.

## 9 Restoring Factory Settings

Restore the Cloud Edge appliance to factory settings to reconfigure your network settings or to decommission hardware. The yellow LED (Light-Emitting Diode) on the back panel shows the factory settings restore status.



1. Power off the Cloud Edge appliance.
2. Press and hold the reset button located on the back panel.
3. Power back on the Cloud Edge appliance.
4. Release the reset button when the yellow LED starts to blink. The yellow LED blinks for 2 minutes and then the appliance restarts.

## 10 Contact Information

- Website:  
<http://www.trendmicro.com>
- List of worldwide offices and phone numbers:  
<http://www.trendmicro.com/us/about-us/contact/index.html>

© 2021 Trend Micro Incorporated. All Right Reserved. Trend Micro and the t-ball logo are trademarks or registered trademarks of Trend Micro Incorporated. All other company and/or product names may be trademarks or registered trademarks of their owners. Information contained in this document is subject to change without notice.

Item Code: APEQ59164/201125