

TREND MICRO™ Deep Edge™ Quick Start Guide

Trend Micro™ Deep Edge™ solution offers a new level of simplicity for deployment, configuration, and management of a next-generation firewall appliance.

Use this Quick Start Guide to get Deep Edge up and running on your network. For more information, see:

- Readme — Covers basic getting started instructions, new features, known issues, and late-breaking information.
- Deployment Guide — Describes installation, planning, deployment, and initial configuration.
- Administrator's Guide — Contains a comprehensive overview of Deep Edge. It also provides detailed configuration and management information.
- Online help — Explains product screens and discusses administrative tasks and relevant concepts.

For the latest versions of Deep Edge documentation, visit Trend Micro's Download Center at: <http://docs.trendmicro.com>

Note: Trend Micro recommends reading the Deep Edge Deployment and Administrator's Guides before setting up the Deep Edge appliance.

1 Your package should include the following items



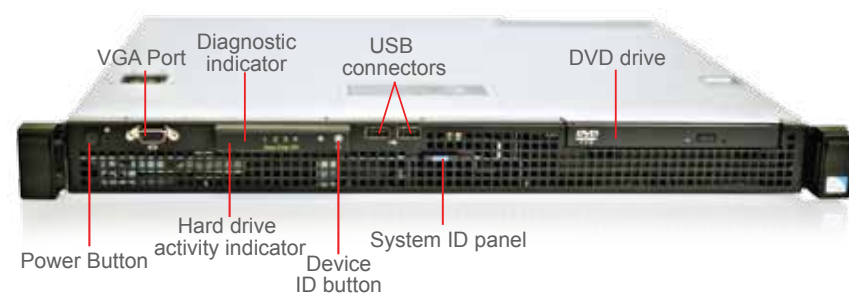
2 Reviewing the device ports

Before connecting the Deep Edge unit:

1. Place the unit on a stable surface or rack.
2. Review the interfaces on the front and back panels of the Deep Edge device.

Front panel

The front panel provides a quick way to connect a keyboard and a VGA monitor to the device.



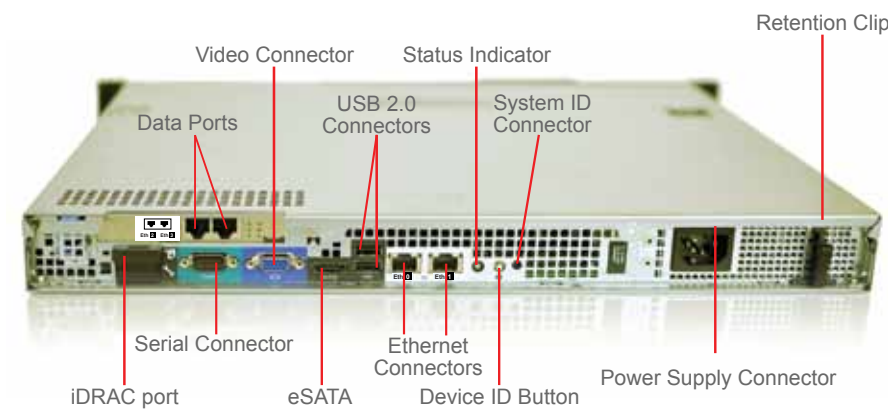
1 of 6

Fold

Fold

Rear panel

The back panel contains all the network interface ports. These ports are grouped into the management interface ports and the data interface ports.



3 Planning your traffic flow

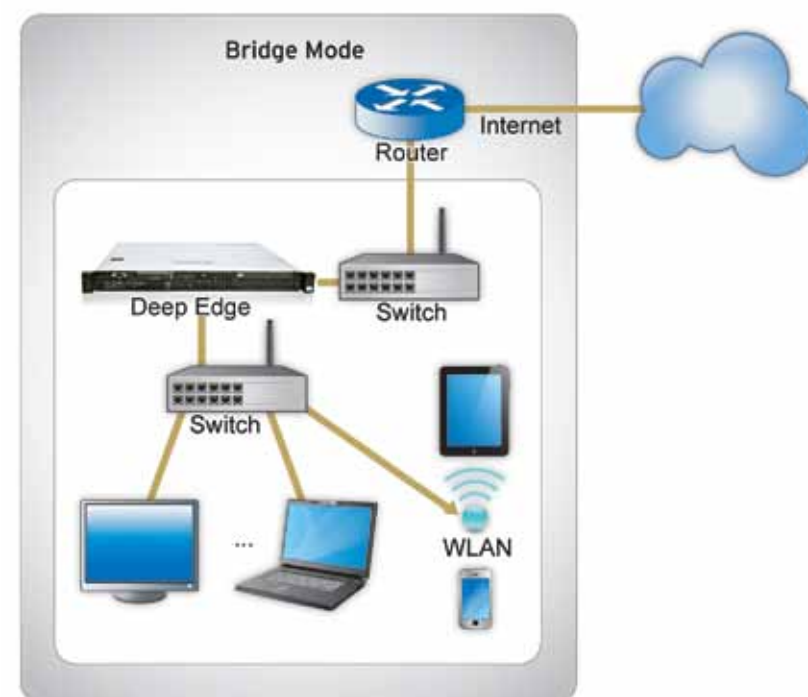
Before configuring the Deep Edge appliance, plan how to integrate the unit into your network. Your configuration plan depends on the operating mode you select: Inline Mode (Routing Mode or Bridge Mode) or Monitoring Mode.

Bridge Mode

In Bridge mode, the Deep Edge unit is invisible to the network. All of its interfaces are on the same subnet. You only have to configure a management IP address so that you can make configuration changes.

You would typically use Bridge mode on a private network behind an existing firewall or behind a router. Position Deep Edge between layer 2 and layer 3 switches to scan all packets entering and leaving that section of the network. In the default Bridge mode configuration, the device functions as a firewall. The Deep Edge unit scans traffic for malware using the default policy until you create a custom policy. Under the default policy:

- Deep Edge scans and blocks malware on all traffic.
- Deep Edge also monitors and detects all types of violations in the network traffic.



2 of 6

Fold

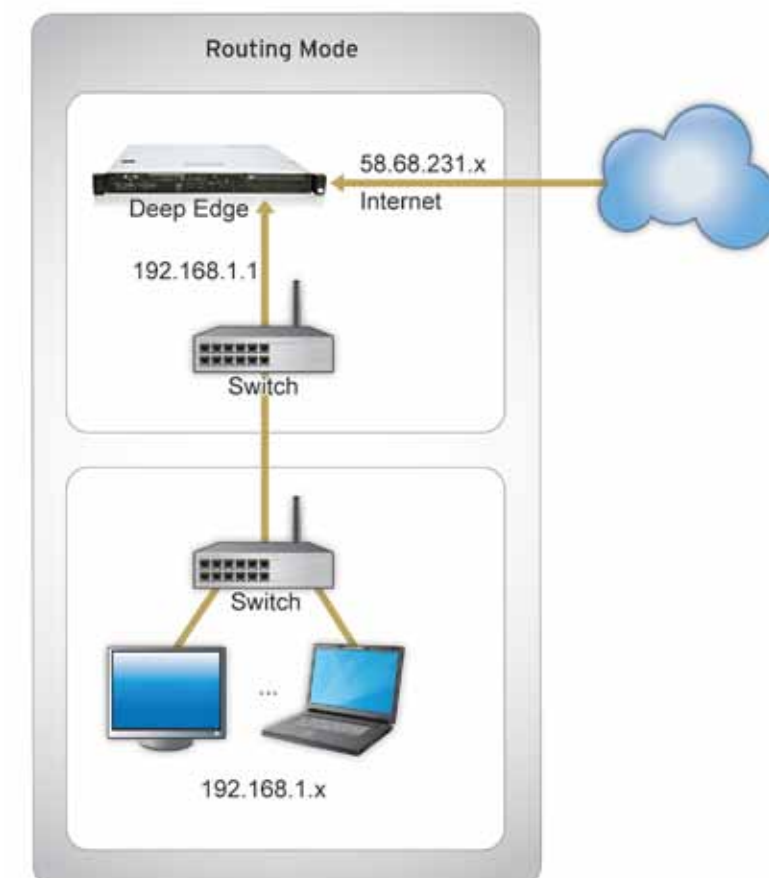
Fold

Routing Mode

In Routing mode, each Deep Edge unit is visible to the network to which it is connected. All of its interfaces are on different subnets. Each interface connected to a network must be configured with an IP address that is valid for that network.

You would typically use Routing mode when the Deep Edge unit is deployed as a gateway between private and public networks. In the Routing mode configuration, the unit functions as a firewall. Firewall policies control communications through the Deep Edge unit. The Deep Edge unit scans traffic for malware using the default policy until you create a custom policy.

Note: To use routing mode, you must switch from the default bridge mode.



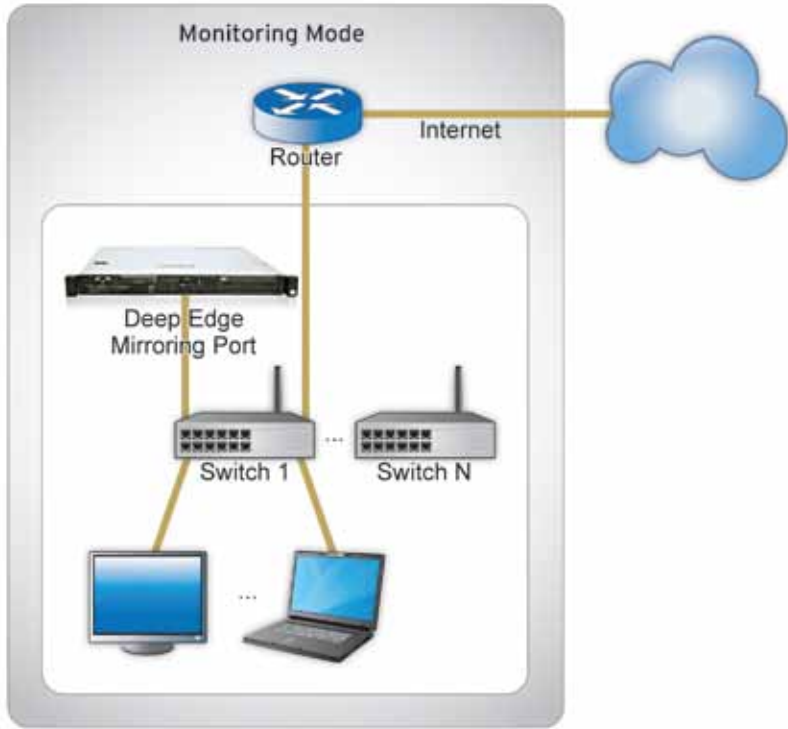
Monitoring Mode

In Monitoring mode, Deep Edge is invisible to the network. Establish the settings for your switch and mirror the traffic to the port that connects to the Deep Edge. Deep Edge monitors your network traffic and only logs violation-related information. Network traffic is never blocked in this mode even if policies exist.

In Monitoring Mode, network traffic does not pass directly through the Deep Edge device. Traffic goes outside of Deep Edge, and Deep Edge runs independently outside the network (logically) aided by the switches of the network which mirror the specified traffic to interface(s) on which Deep Edge listens. Deep Edge monitors the status of the traffic and presents the information to the Deep Edge admin.

Trend Micro suggests Deep Edge be deployed at the core Internet switch in order to see a copy of all Internet traffic leaving and entering your corporate network.

3 of 6



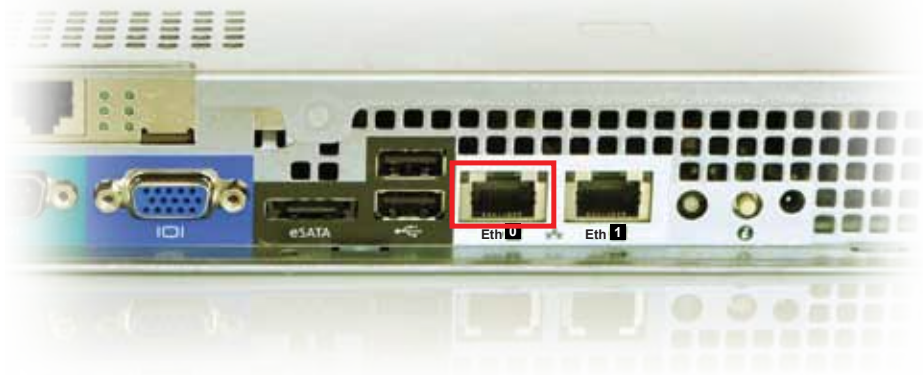
4 Configuring the Device Settings

Use the information below to configure the Deep Edge unit in your environment.

IP Address	Description
Management IP address and netmask	Use an IP address in your subnet
DNS server IP address	Use your network DNS server IP address
Default gateway IP address	Use your network gateway IP address

To set the Deep Edge management IP address and netmask:

1. Connect your laptop or computer to the Deep Edge eth0 port.



2. Set your computer IP address to 192.168.252.2 and the netmask to 255.255.255.0.
3. Type the following URL in your browser: <https://192.168.252.1:8443/> to access the Deep Edge web console.
4. Log on to the web console using the default "admin" account.
User name: admin
Password: adminDeepEdge
5. Go to **Network > Interfaces**. Click **eth0** in the Name column.
6. Edit this interface by changing the IP address to the one you selected to act as the Deep Edge management IP address.
7. Click **Apply**.
8. Access new the URL for the Deep Edge web console that you just configured by going to <https://<IP address just configured>:8443/> in your browser.

Note: You may need to change your computer IP address to access Deep Edge with new IP address.

To configure the DNS server IP address:

1. Log on to the web console as configured in the previous procedure.
2. Go to **Network > DNS**.
3. Configure the DNS IP address (primary and secondary if applicable).
4. Click **Apply**.

To configure the static route settings:

1. Go to **Network > Routing > Static Routes**.
2. Click **Add New** to create a default route.
3. Type the following values:
Network: 0.0.0.0/0
Next hop: Your default gateway IP address
4. Check the **Enable this route** checkbox.
5. Click **Apply**.

5 Connecting the device to the network

How you connect the Deep Edge unit depends on the mode selected in section 3.

To connect Deep Edge to your network:

1. Connect one end of a network cable to a port in the data interface.
2. Connect the other end of the cable to a segment of your network.

Note: For information on selecting the right ports and High Availability modes, see the Deployment Guide.

Connecting for Inline Mode (Bridge or Routing)



Connecting for Monitoring Mode



6 Test your deployment and define your own policies

The default policy rules allow network traffic to pass. Try accessing the Internet from the internal client to test the deployment.

You can define your own policies rules after successfully testing the deployment. Refer to Deployment Guide for setup details or Administrator's Guide for the policy-creation details.

After updating components, use the Deployment Guide to deploy Deep Edge in your network. You can create multiple policies directed at different types of endpoints and traffic. You can check your defined policies for different IP address ranges, ports, and users. If you have multiple policies, only the first policy that matches an endpoint will apply to the endpoint.

To get a better understanding of component updates and policy enforcement, consult the Administrator's Guide.



©2013 by Trend Micro Incorporated. All rights reserved. Trend Micro, the t-ball logo are trademarks or registered trademarks of Trend Micro Incorporated. All other company and/or product names may be trademarks or registered trademarks of their owners. Information contained in this document is subject to change without notice.

Item Code: CTEK25839/130102