

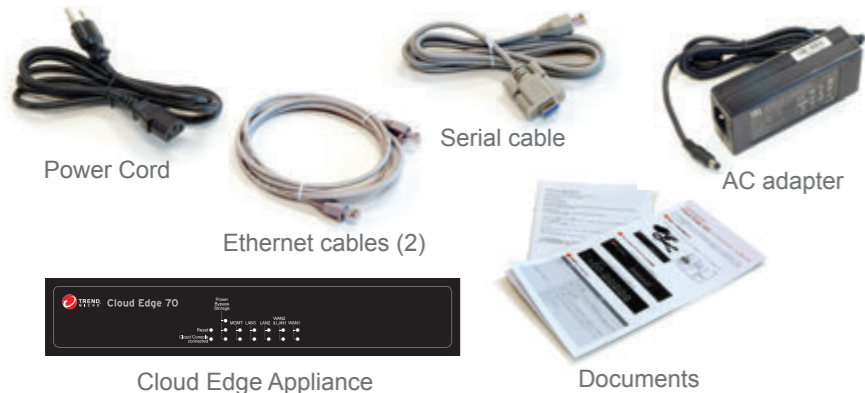
TREND MICRO™ Cloud Edge 50/70/SB Quick Start Card *Software Switch*



Trend Micro Cloud Edge is a next generation security solution for MSPs (Managed Service Provider) that combines on-premises and cloud-based security features. Deploy your Cloud Edge appliances on-premises and the MSP can remotely manage your network through the cloud.

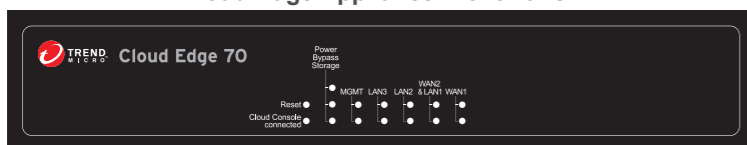
1 Opening and Inspecting the Carton

Verify that the Cloud Edge appliance carton contains the following items:

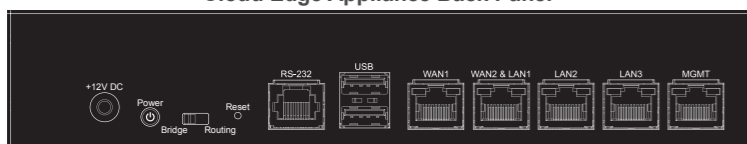


2 Examining the Cloud Edge Appliance

Cloud Edge Appliance Front Panel

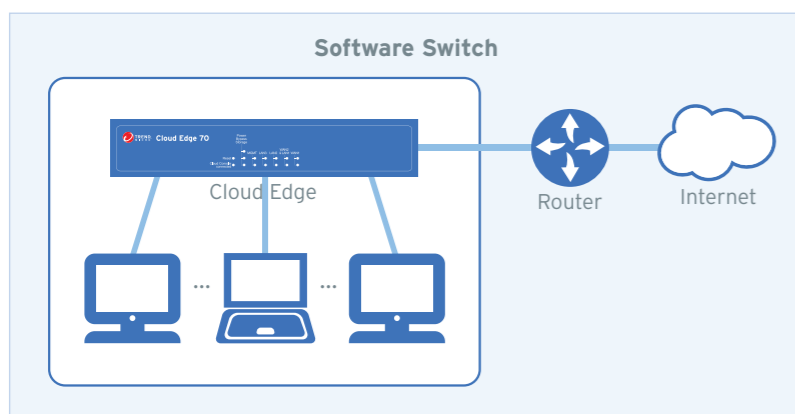


Cloud Edge Appliance Back Panel



Note: The model name and panels shown might differ slightly from your appliance.

3 Deployment Modes



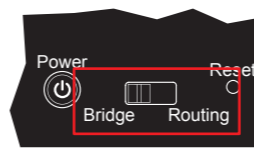
Mode	Description
Software Switch	The Cloud Edge appliance acts as a layer 2 software switch located between an upstream network device (switch, router, or firewall) and end points. Software switch is a variation of bridge mode that scans all traffic that passes through it for malware. All ports besides the uplink port are directly connected to end points such as clients, servers, and Wi-Fi access routers.

4 Deployment Checklist

Requirement	Details
Ethernet cables (3-5 cables)	Connect a laptop to the MGMT port. Connect the WAN port, which serves as an uplink to the Internet, to the upstream side of the network. Connect the LAN1 port to an internal end point. Optionally connect the LAN2 and LAN3 ports to additional internal end points.
IP addresses (1 address for br0)	Obtain information for one internal address, either DHCP or static (IP address, netmask, and gateway).
DNS Settings	Use either automatic DNS settings assigned by DHCP or obtain your network DNS server IP addresses.
Laptop with Ethernet port	A computer that has the following software installed: <ul style="list-style-type: none"> • Adobe™ Flash™ 10 or later • Supported web browser <ul style="list-style-type: none"> ◦ Firefox™ 61 or later ◦ Google™ Chrome 68 or later ◦ Internet Explorer™ 10-11

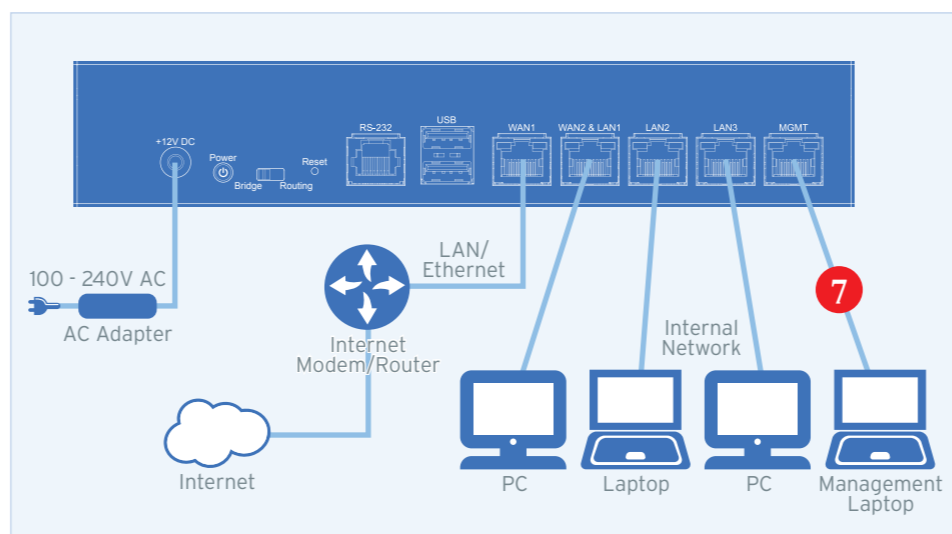
5 Setting up the Hardware

1. Toggle the switch on the back panel to Bridge.
2. Connect the Cloud Edge appliance to a power source.
3. Power on the Cloud Edge appliance.



6 Connecting to the Network

1. Connect the WAN1 port to the upstream side of the network.
 2. Connect the LAN1 port to an end point on the internal network.
 3. Optionally, connect the LAN2 and LAN3 ports to additional end points.
- LAN 2/LAN 3 ports will automatically change from disabled to enabled after Step 8.



7 Logging on the Web Console

1. Connect computer to the Cloud Edge appliance **MGMT** port.
2. Open a supported web browser.
3. Go to the following URL: <https://192.168.252.1:8443/>
4. Specify the logon credentials.
 - **User name:** admin
 - **Password:** adminCloudEdge
5. Press **Enter** or click **Log On**.

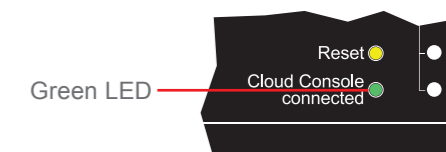
8 Performing the Initial Configuration

After logging on for the first time, the **Quick Setup** screen opens automatically.

1. Click on the **Cloud Edge On-Premises Console** link.
2. Go to **Network → Bridge** and click on br0.
3. For **Type**, select **Software Switch**.
The **Switch Interfaces** field appears with **WAN** and **LAN1** preselected. You cannot deselect them. Because the configuration must have a minimum of three interfaces, you must select at least one additional interface.
4. Select either **LAN2** or **LAN3** or select both interfaces.
5. Specify the network information for the br0 interface.
 - **DHCP**
 - **Static:** Specify IPv4 address, netmask, and gateway.
6. Click **Apply**.
7. Click on **Quick Setup** in the top-right corner.
8. Under **Uplink Configuration** section, specify DNS server IP addresses.
Step is optional if DNS addresses assigned by DHCP.
9. Under **System settings** section:
 - a. Specify a FQDN in the **Host name** field.
 - b. Configure time settings.
 - Automatically: Select **Enable NTP server** and enter the NTP server IP address.
 - Manually: Select **Manually set time** and enter time in the **Local time** field.
 - c. If needed, set the time zone.
11. Click **Test Configuration** to verify and then click **Save & Register**.

9 Verifying Connectivity

The Green LED (Light-Emitting Diode) on the front panel shows the deployment status.



Green LED	Status
No light	The Cloud Edge appliance cannot communicate with the Internet.
Solid green light	The Cloud Edge appliance is registered and communicating with Cloud Edge Cloud Console.
Blinking green light	The Cloud Edge appliance is not registered or cannot communicate with Cloud Edge Cloud Console. Contact your managed service provider for assistance.

10 Contact Information

- Website: <http://www.trendmicro.com>
- List of worldwide offices and phone numbers: <http://www.trendmicro.com/us/about-us/contact/index.html>

© 2018 Trend Micro Incorporated. All Right Reserved. Trend Micro and the t-ball logo are trademarks or registered trademarks of Trend Micro Incorporated. All other company and/or product names may be trademarks or registered trademarks of their owners. Information contained in this document is subject to change without notice.

Item Code: APEQ28445/180814